

FURUNO

12.1" COLOR LCD DISPLAY SEARCHLIGHT SONAR

Model

CH-500

(Frequency 60/88/150/180/240 kHz)

Unmatched tracking speeds
High resolution echoes



More details on
www.furuno.com



Smart features for productive fishing

Incredibly fast training speeds means less tracking failures

NEW

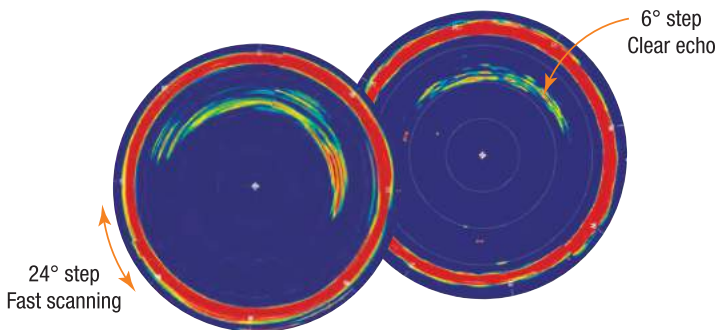
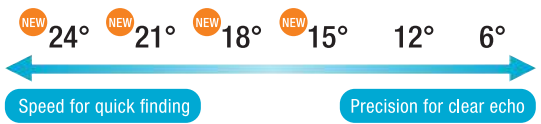
Faster motor delivering quicker training speeds

Quick train speeds allow the sonar display to be refreshed at a faster rate, aiding in earlier detection of fish and obstructions.

6 step angles for training speed adjustment according to user's needs

The CH-500 sonar is one of the most comprehensive and fastest sonars of its kind. It provides six selectable step variations (6°, 12°, 15°, 18°, 21° or 24°) for high scanning speed that can cover sector widths from 24° to 360° in a couple of seconds. Thanks to its high training speeds, the CH-500 can rapidly scan a large area providing the ultimate fishing and navigational experience.

Expert tip: When moving fast, you can use a wider step angle in order to get a glimpse of the surrounding area. If you detect something interesting, slow down and switch to a decreased step angle for clearer echoes.



Full Circle Scanning Period(s) in seconds (150kHz)

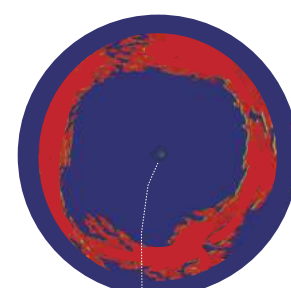
No.	1	2	3	4	5	6	7	8	9	10	11	12	13	14	15	
Range (m)	10	20	40	60	80	120	160	200	250	300	400	500	600	800	1000	
Step Angle	6°	3.8	3.8	3.8	5.2	6.8	10.1	12.9	16.5	20.6	24.3	32.5	40.5	48.3	64.6	80.5
	15°	3.7	3.7	3.7	3.8	4.8	5.6	7.2	8.4	10.1	12	15	18.2	21.6	27.8	34.1
	24°	3.7	3.7	3.7	3.7	3.9	4.5	5.8	6.6	7.7	8.8	10.7	12.8	15	18.7	22.6

Built-in motion sensor provides stabilized target presentations in rough sea conditions

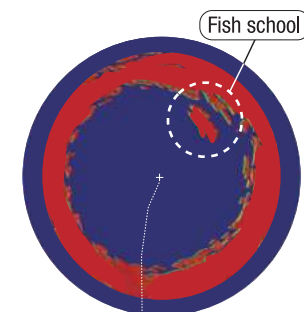
The CH-500 searchlight sonar is the first of its class to have integrated motion sensors. In rough seas, vessels tend to move in every direction. This movement can cause inaccurate target information to be displayed. The role of the integrated motion sensors is to precisely compensate for those negative effects and provide accurate data to the user.

On the picture: You can see that once the stabilizer is activated, the bottom echo recovers its circular shape. The sonar is then able to provide accurate data even if the vessel is pitching and rolling. Thanks to its integrated motion sensors, the CH-500 is able to detect fish that didn't appear with the non-stabilized echo.

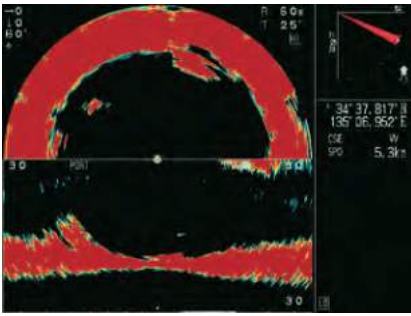
Stabilizer OFF



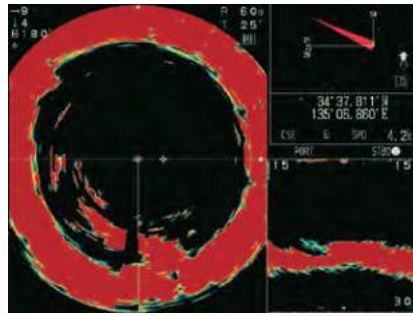
Stabilizer ON



Combination displays



Half-Horizontal + Vertical

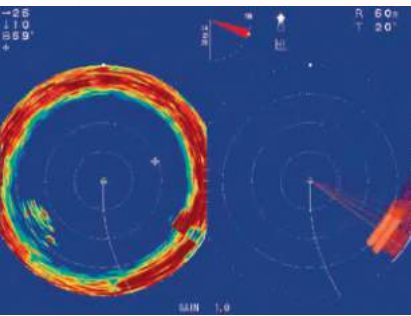


Horizontal + Vertical

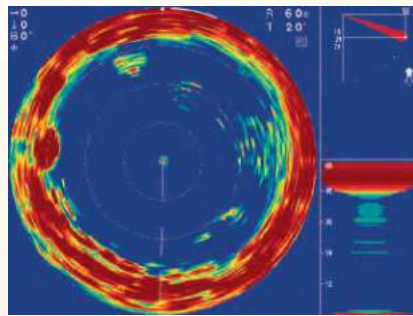
Horizontal + Vertical

A Vertical and a Horizontal scan are displayed in a split screen mode and targets can be tracked in these two dimensions at the same time.

It is also possible to choose between Horizontal and Horizontal (zoomed) for the Horizontal scan.



Horizontal + Full-circle A-Scope

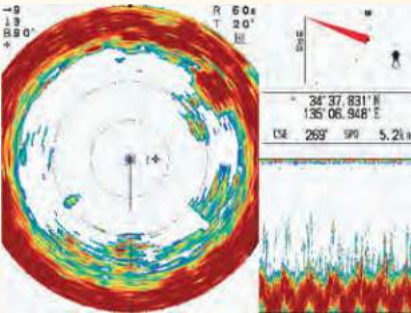


Horizontal + A-Scope

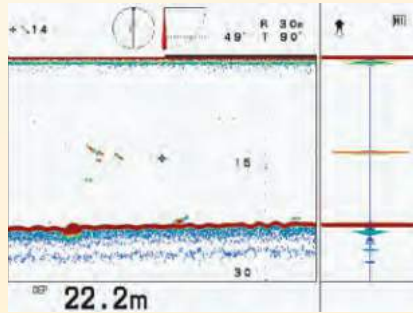
Horizontal + A-scope

This mode can simultaneously display the Horizontal and the Full-circle A-Scope so that echoes can be analyzed in details with the A-Scope mode, while the Horizontal mode swipes the sea around the ship.

It is also possible to choose between two kinds of A-Scope mode: Full-circle A-Scope and A-Scope.



Horizontal + History



Echo sounder + A-Scope

Horizontal + History

Horizontal mode combined with a history mode offers the possibility to look at the past data on a vertical plane, while scanning horizontally around the vessel. It is very useful to grasp the movement of the fish and to know if the target is coming closer.

Echo sounder + A-Scope

To simultaneously display Echo sounder mode and A-Scope mode.

INTERCONNECTION DIAGRAM

